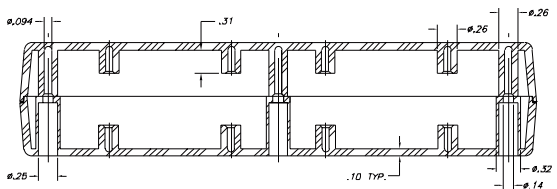
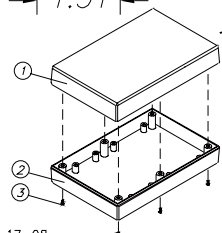
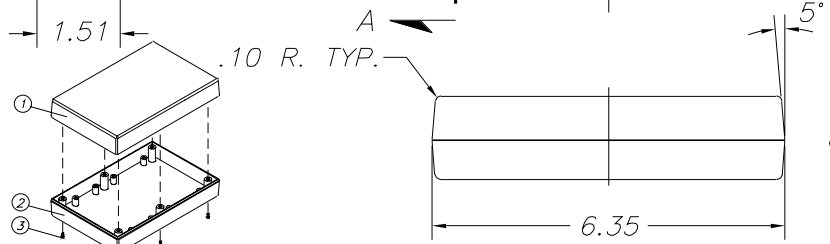
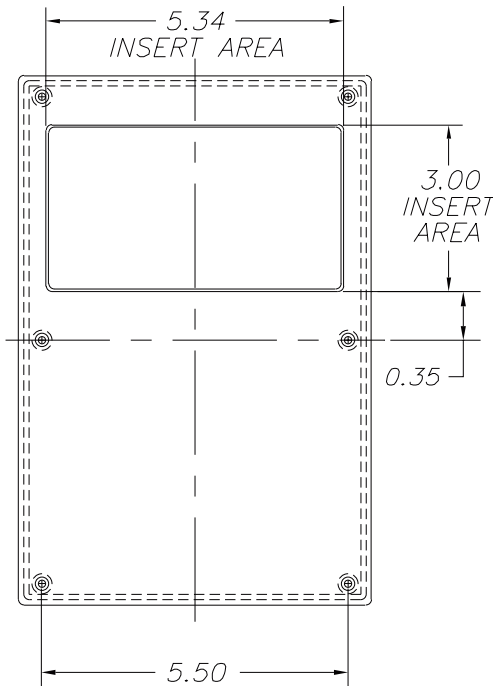
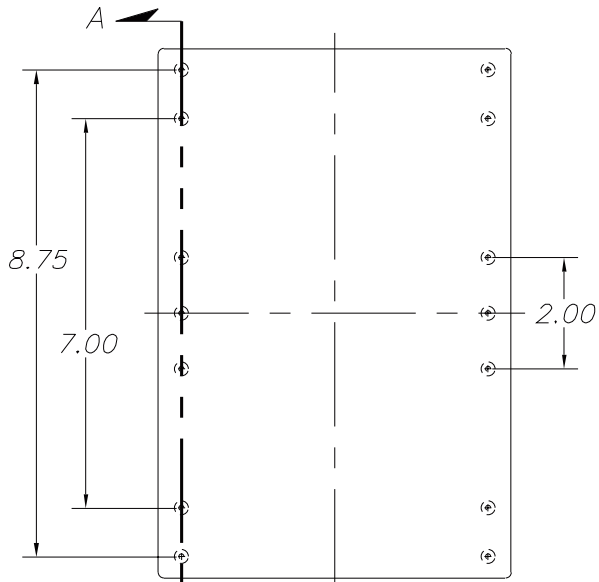
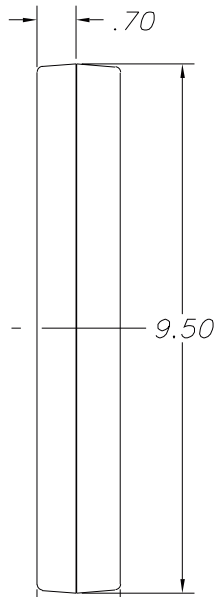


SERPAC 191

Electronics Enclosures

NOTES:
1. WHEN MACHINE OR I PLATES MODIFICATIONS ARE REQUIRED, USE THE CENTER OF THE BOX TO DIMENSION.



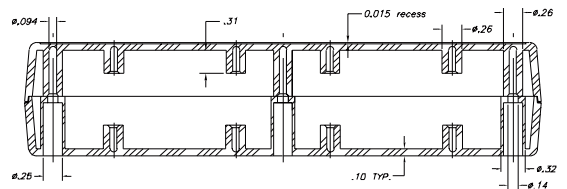
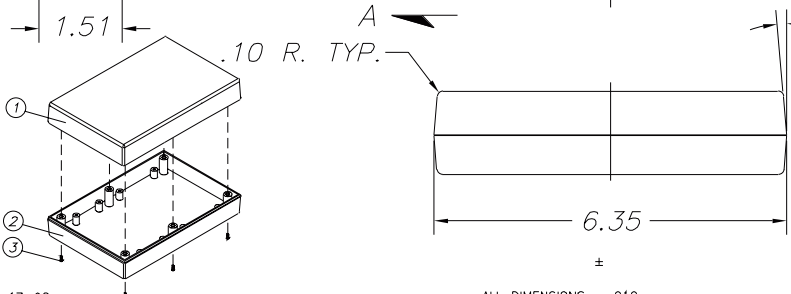
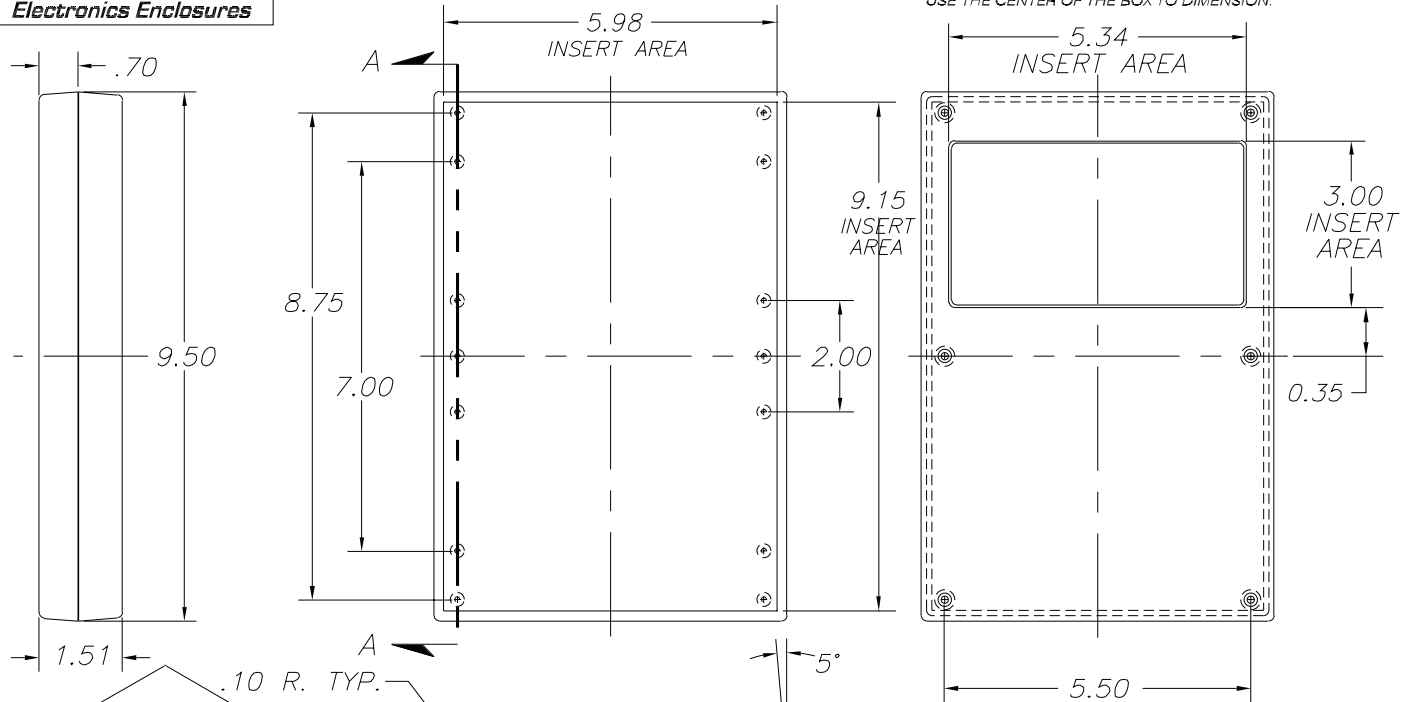
8-17-98. ALL DIMENSIONS ± .010

ITEM	PART NO.	DESCRIPTION	ACCESSORIES	
1	91	PLASTIC TOP	PART NO.	DESCRIPTION
2	19	PLASTIC BOTTOM	50	FEET
3	6005	SCREWS (6)		

SERPAC 191-I

Electronics Enclosures

NOTES:
1. WHEN MACHINE OR I PLATES MODIFICATIONS ARE REQUIRED, USE THE CENTER OF THE BOX TO DIMENSION.



8-17-98. ALL DIMENSIONS .010

ITEM	PART NO.	DESCRIPTION	ACCESSORIES	
			PART NO.	DESCRIPTION
1	911	PLASTIC TOP		
2	19	PLASTIC BOTTOM		
3	6005	SCREWS (6)	50	FEET

SECTION A-A